

CARACTERÍSTICAS / CHARACTERISTICS

MATERIAL Hormigón / Hormigón reciclado

COLOR carta de colores estándar

ACABADO decapado e hidrofugado

COLOC. anclado con tornillos

PESO Box250: 1326kg / Box200: 1062kg /

Box150: 796kg / Box100: 531kg /

Box50: 266kg

MATERIAL Concrete / Recycled concrete

COLOUR standard color chart

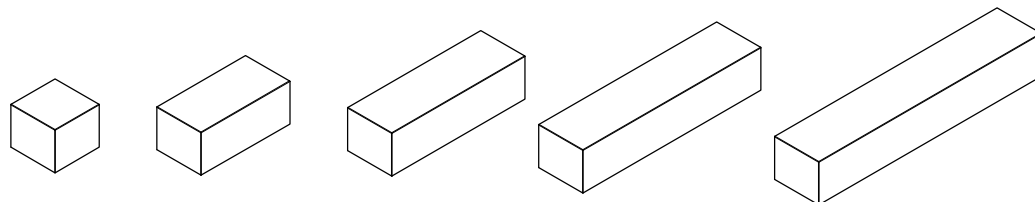
FINISH etched and waterproofed

FIXING anchored with screws

WEIGHT Box250: 1326kg / Box200: 1062kg /

Box150: 796kg / Box100: 531kg /

Box50: 266kg



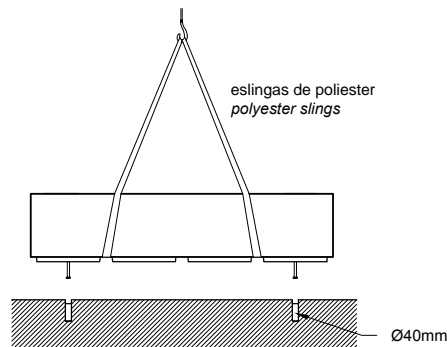
Update 04/01/2019
Cotas / Sizes cm

INSTALACIÓN / INSTALLATION

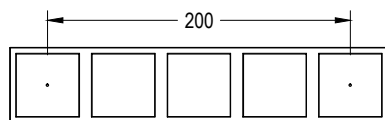
E:1/50

elevación / hoisting

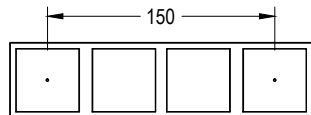
P = 266kg / 531kg / 796kg / 1062kg / 1326kg



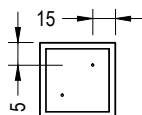
BOX 250



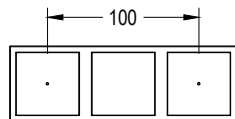
BOX 200



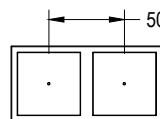
BOX 50



BOX 150



BOX 100



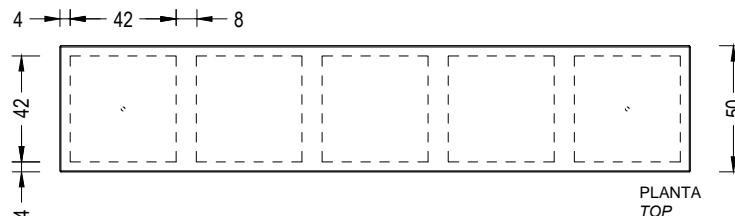
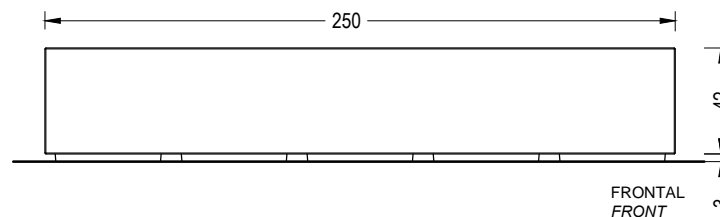
rosar 2 tornillos a fondo (Din 931 M16 x 140 mm)
tightly screw stud bolts (Din 931 M16 x 140 mm)

taladrar el pavimento y rellenar de resina o mortero rico
drill the pavement fill with resin or fat mortar

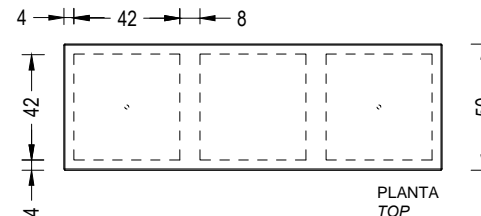
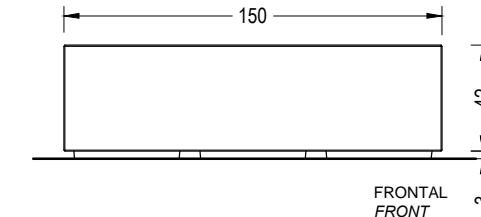
GEOMETRÍA / GEOMETRY

E:1/30

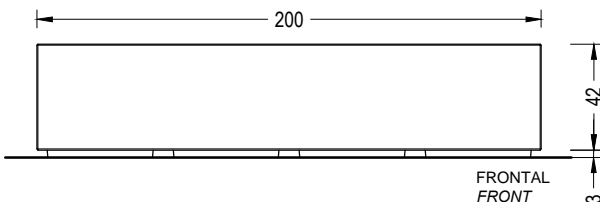
BOX 250



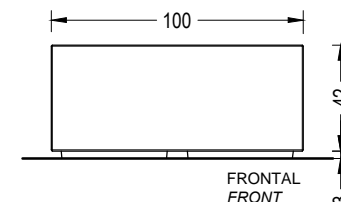
BOX 150



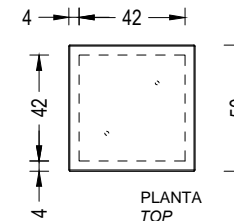
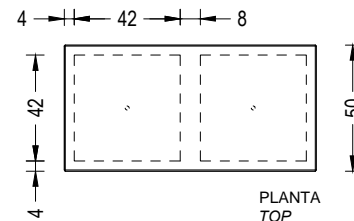
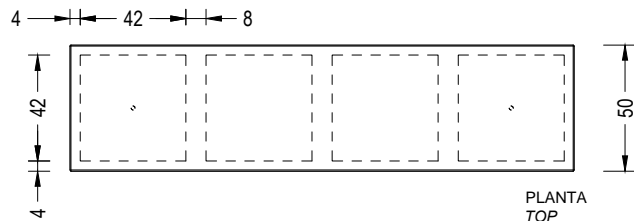
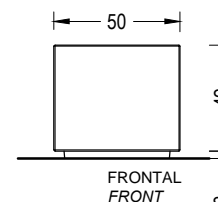
BOX 200



BOX 100



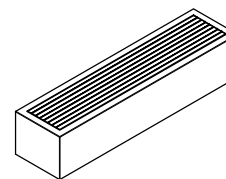
BOX 50



CARACTERÍSTICAS / CHARACTERISTICS

MATERIAL Hormigón / Hormigón reciclado
COLOR carta de colores estándar
ACABADO decapado e hidrofugado
COLOC. anclado con tornillos
PESO Teca: 1051 kg

MATERIAL Concrete / Recycled concrete
COLOUR standard color chart
FINISH etched and waterproofed
FIXING anchored with screws
WEIGHT Teak: 1051 kg

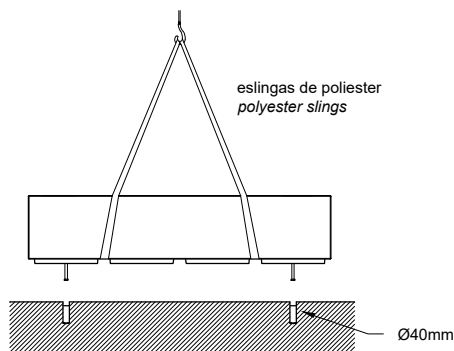


Update 08/07/2024
 Cotas / Sizes cm

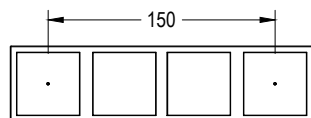
INSTALACIÓN / INSTALLATION

E:1/50

elevación / hoisting
 P = 1051 kg / 1054 kg



BOX 200



roscar 2 tornillos a fondo (Din 931 M16 x 140 mm)
 tightly screw stud bolts (Din 931 M16 x 140 mm)

taladrar el pavimento y rellenar de resina o mortero rico
 drill the pavement fill with resin or fat mortar

GEOMETRÍA / GEOMETRY

E:1/30

