





BRANCA is a trio tree-like columns blend with nature by day and illuminate at night, marking the space and enhancing the landscape's play of light and shadow.

CE | UNE-EN 40-5 | Galvanized steel |  |  10 m/max. |  223 kg/max.

 Update 23.05.2024



BRANCA

VOLstudio 2024

Escofet
by Molins^o

ORIGIN

The product originates from the Espai Cràter project in Olot, where the urban environment mimics a natural beech forest, and aims to integrate urban luminaires into the illuminated landscape.

DESIGN

Tree-like columns merging with nature during the day, illuminating the space at night, marking the space with a play of light and shadow typical of the landscape.

The truncated, inclined, and faceted columns, available in one, two, or three sections, host adjustable luminaires that conquer airspace with consistent orientation.

MATERIAL

Available in cor-ten steel, hot-dip galvanized steel, or galvanized and RAL-colored painted options. The sealed linear luminaires, 1.2m long, offer 3000K or 4000K lighting, boasting an efficiency of 138lm/W with power ranging from 29 to 40W.

INSTALLATION

Must be unloaded and handled with slings. Anchored with a base plate and four threaded bolts to a concrete foundation with the recommended generic dimensions.



BRANCA



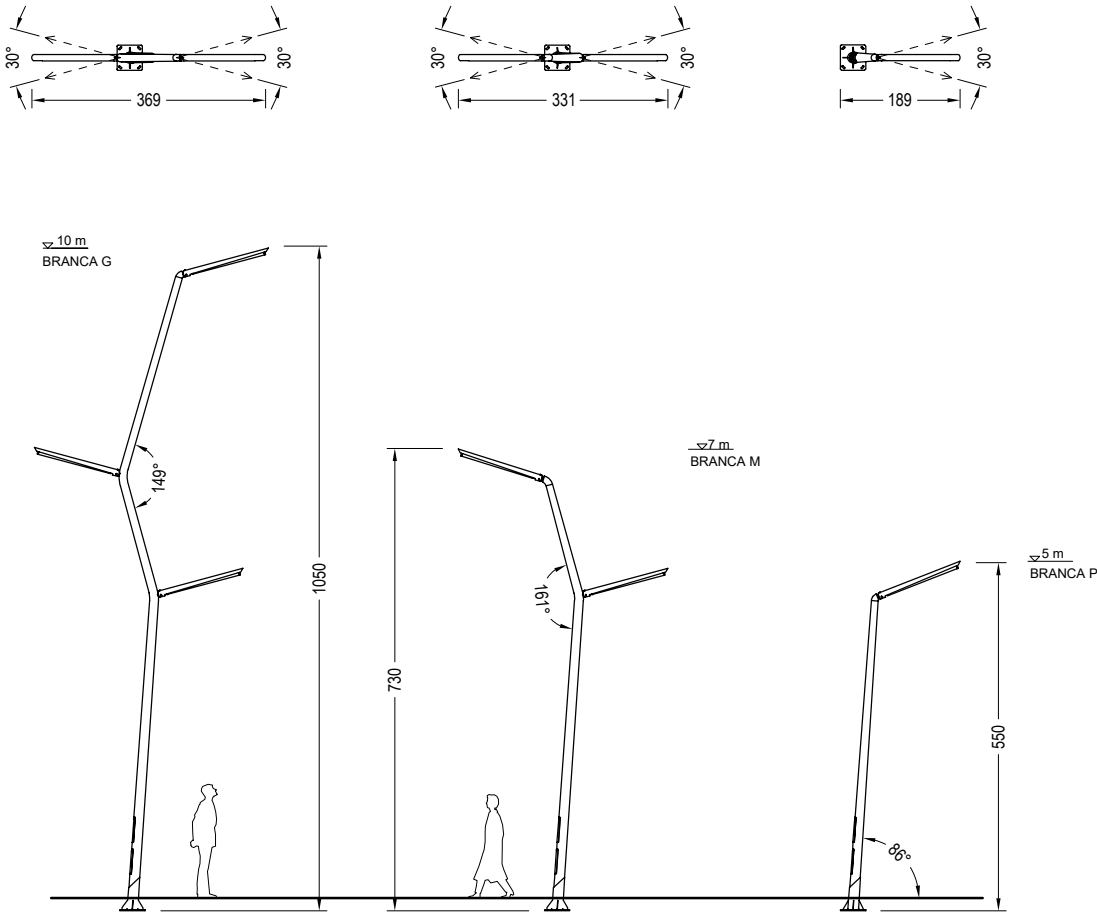
BRANCA



Photography: Marc Torra - Fragments

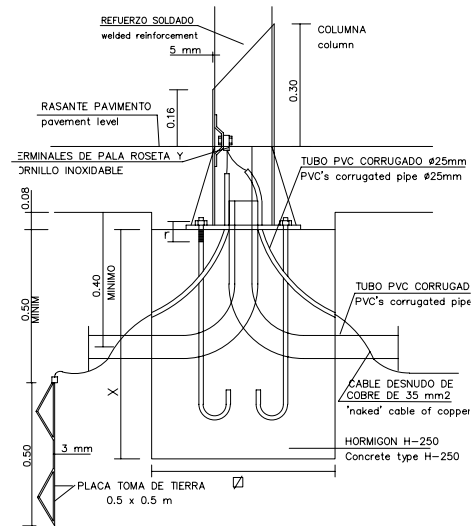
Escofet
by Molins^o

1.1 Design options

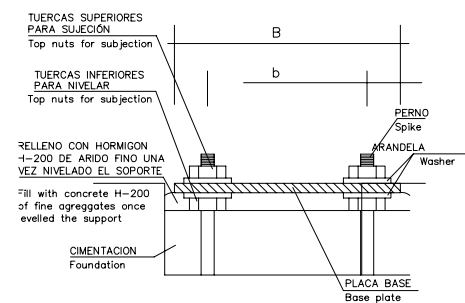


1.2 Foundation

DETALLE CIMENTACIÓN COLUMNA TIPO Y TOMA DE TIERRA /
DETAIL OF COLUMN FOUNDATION AND ELECTRICAL CONNECTION



CIMENTACIÓN Y PERNOS /
FOUNDATION AND SPIKES



	G	M	P	
PESO weight	corten	223 kg	162 kg	113 kg
	galva	189 kg	140 kg	99 kg
	pintado/coated	197 kg	147 kg	104 kg
COLUMNAS columns	H=10 m	H=7 m	H=5 m	
	ø SUP	100 mm	100 mm	100 mm
	ø INF	160 mm	160 mm	160 mm
PUERTAS REGISTRO inspection hatch	2	2	2	
	P	400 mm	400 mm	400 mm
	M	100 mm	100 mm	100 mm
CIMENTACIÓN foundation				
	X	100 cm	100 cm	80 cm
	∅	80 cm	80 cm	80 cm
PLACA BASE base plate				
	pernos(4)/spikes	M-22x700	M-22x700	M-22x700
cartelas/consolas	150mm(4)	150mm(4)	150mm(4)	
∅ placa B/plate B	400 mm	400 mm	400 mm	
∅ centros b/centers	300 mm	300 mm	300 mm	
	E	15 mm	15 mm	15 mm
LUMINARIAS lightings	3	2	1	

1.3 Features

Material	Galvanized steel or Cor-ten steel or coated steel	Weight	According to model and finish
Dimensions	10m / 7m / 5m	Thickness	Galvanized 4 mm Cor-ten 5 mm
Finish	<p>A. Hot-dip galvanized steel.</p> <p>B. Hot-dip galvanized steel coated cor-ten effect: *</p> <ol style="list-style-type: none"> 1. Zinc rich epoxy primer. 2. Two-component polyurethane coating satin. <p>C. Cor-ten.</p>		



A. Galvanized

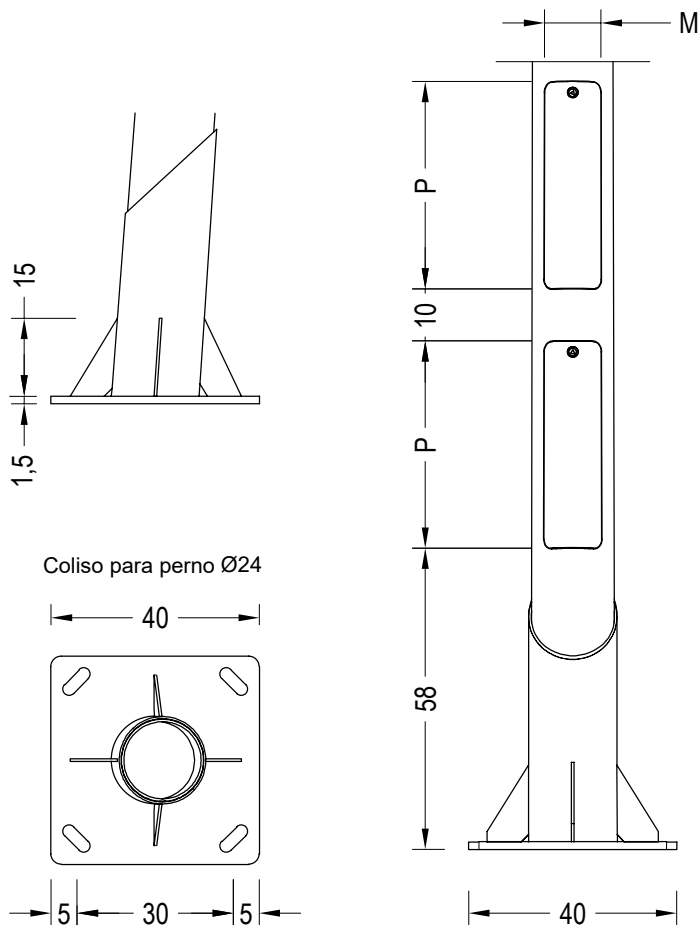
B. Galvanized and coated cor-ten effect

C. Cor-ten

* Optional RAL colour coating, consult with OT

Post regulations	Galvanized. UNE-EN 40-5:2002 Cor-ten. No regulation associated.	Reinforcement	Bottom ring, 6-mm thick.
-------------------------	--	----------------------	--------------------------

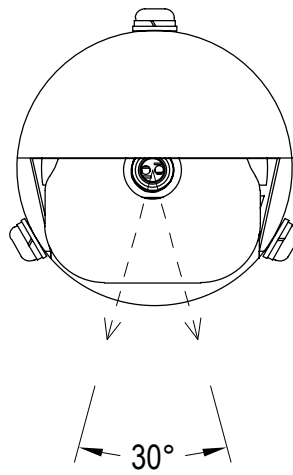
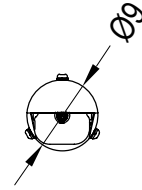
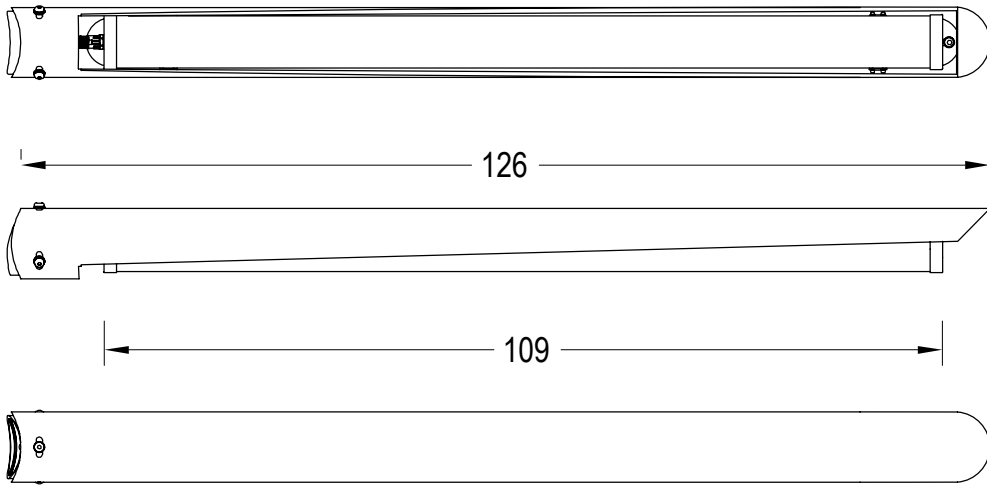
1.4 Details



Puertas de registro y cerramiento con llave de tubo triangular /
Inspection hatch and lock with triangular tube key

1.5 Luminaire

Colour temperature 3000K or 4000K



Orientación de la luminaria
Adjustable light

BRANCA



Warranty

The warranty for this product is 3 years, in accordance with European Union legislation.

The names, trademarks and industrial models of the products have been logged in the corresponding registers. The technical information provided by Escofet about its products can be modified without prior notice.

Escofet 1886 S.A
Head office and production

Montserrat, 162
E 08760 Martorell
Barcelona - España
T. 0034 937 737 150
F. 0034 937 737 151

info@escofet.com
www.escofet.com

Escofet
by Molins[®]



GA-2005/0072



SST-0090/2010



ER-0403/2016

