

Stul is a functional stool for sitting on or that inspires jumping games. It is ideal for green areas and children's playgrounds. It can also be used as a pylon with a swivel seat on private terraces or in indoor areas such as libraries or other institutions. It stands out for its lightness and wide color palette.

Polyethylene HDPE | Ø 60 cm | ⚖ 12 kg | 📦 1

🔄 Update 14.07.2023



Origin

Stul appears to fill the need for a lightweight stool that can be combined with the rest of Air Collection.

Modular

Stul is a versatile stool and can be installed in multiple contexts. As a stool around a table, combined in groupings and even as a seat in children's play areas.

Recycled and recyclable

It is monomaterial and 100% recyclable. The option in black color is 100% recycled, and consequently it is an environmentally sustainable product.

Non-porous

The peculiarity of non-porous HDPE material means that its surface is easy to wash with pressurised water and a degreasing detergent that contains surfactants. It is disinfected with a hydro-alcoholic solution.

Material

Made with rotomolded HDPE polyethylene, it's available in a wide variety of colors. With a threaded inspection chamber cover permitting access to the interior.

Installation

Can be installed on the paving, and anchored, if required, using a hidden and removable system of screws recessed in the paving.



STUHL



Escofet®

STUHL



Escofet[®]

STUJL



Escofet®

STUJL



Escofet[®]

STUJL



Escofet®

1. Stool

Stul			
Dimensions	Ø60 x 52 cm		
Weight	12 kg		
1.1 General features			
Material	Polyethylene HDPE	Fixing	Free-standing / Anchored
Finish	Micro-textured	Performance	UV resistance and outdoors
Flame retardant	Complies with the regulations euroclasses UNE-EN 13501-1:2019, classified as "E" in relation to its reaction to fire behavior.		

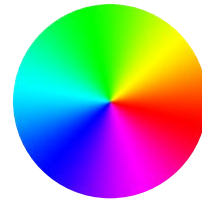
Colours



RBN. White



RNG. Black
100% recycled



Color chart standard *

* Optional colour according to project

1.2 Installation system

Hoisting

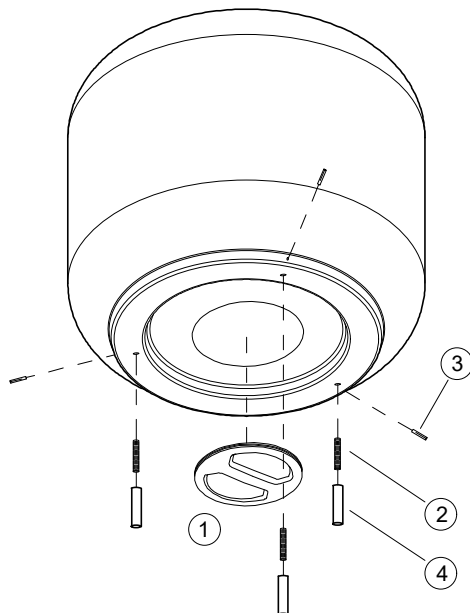
(W=12 kg)

Installation

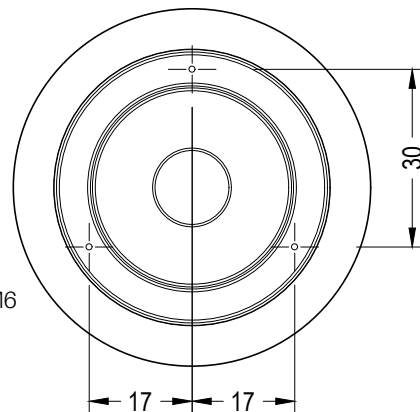
1. Indoor: free-standing

2. Outdoor: Hidden and Removable anchored: Screw the M6 screws into the bushing supplied. Place the bushing+screw kit in the existing holes in the bench. Screw in 3 M5 side fasteners until the M6 screw is tight. Rotate the bench, mark the position. Drill holes in pavement (Ø20), fill with resin or fat mortar and place the bench.

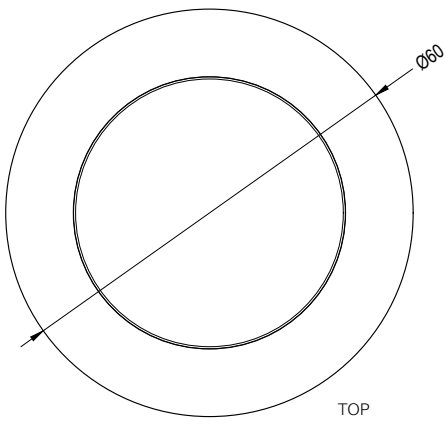
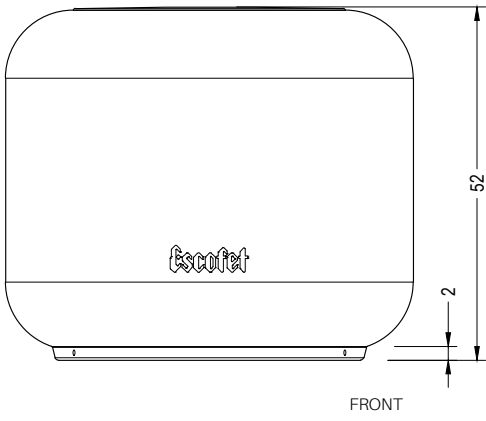
Optionally, to gain weight, the customer can ballast it with sand.



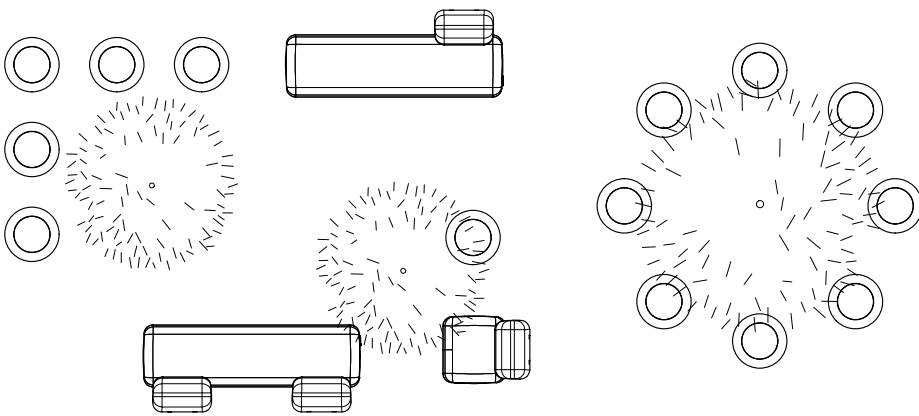
- ① threaded inspection hatch
- ② screw M6
- ③ side fastener M5
- ④ threaded bushing for pavement M6



Stuhl



Agregation





The names, trademarks and industrial models of the products have been logged in the corresponding registers. The technical information provided by Escofet about its products can be modified without prior notice.

Escofet 1886 S.A
Head office and production

Montserrat, 162
E 08760 Martorell
Barcelona - España
T. 0034 937 737 150
F. 0034 937 737 151

info@escofet.com
www.escofet.com



GA-2005/0072 SST-0090/2010 ER-0403/2016